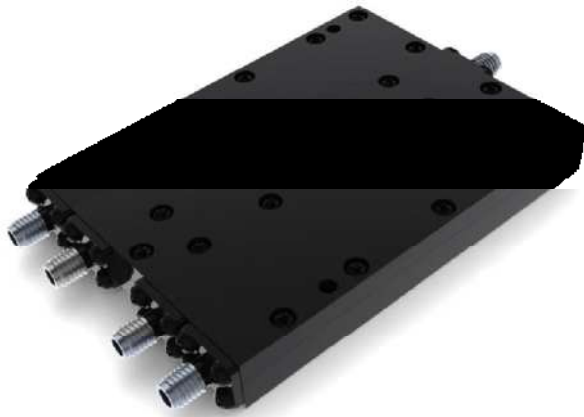


**4-Way Power Divider**



**Features**

- 1.Theoretical Insertion Loss not included in the Insertion Loss Parameter.
2. Multi-Octave bandwidth of working frequency range.
3. Superior phase balance and amplitude balance between any 2 ports.
4. Low VSWR and high Output Isolation.

**Elec. Spec. "50Ω"**

[Inquiry](#)

Freq. Range (GHz)	1-18
Input VSWR Max	1.5
Output VSWR Max	1.5
Insertion Loss (dB) Max	2.5
Amp. Bal. (dB) Max	±0.4
Pha. Bal. (deg) Max	±3
Isolation (dB) Min	17
CW Power (W) Max	20
Peak Power (KW) Max	3
Connector	SMA-Female
Operating Temp. (°C)	-35~+105
Storage Temp. (°C)	-55~+125

**Outline Drawing Unit: mm**

